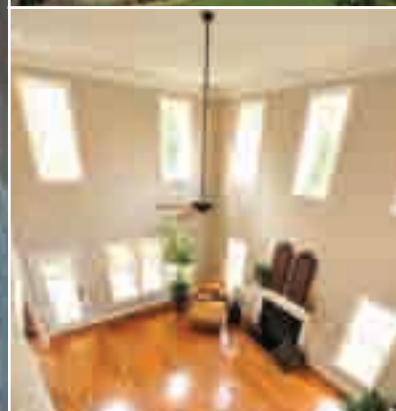




Texture Sprayers

Graco's Complete Line of Professional Texture Sprayers and Accessories



PROVEN QUALITY. LEADING TECHNOLOGY.

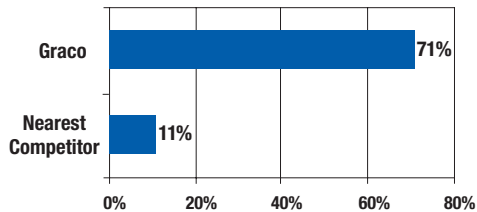
There is no other sprayer like a GRACO.

Welcome to a whole new world of texture application possibilities.

Over the years, the TexSpray family of products has been expanded and improved to meet the ever-changing needs of the professional texture industry – delivering substantial benefits to the professional texturing contractor. Each TexSpray model boasts plenty of user-friendly features and broad performance capabilities. Graco has a TexSpray model for spraying nearly every application!

According to Frost & Sullivan, “U.S. Painting Contractors overwhelmingly rate Graco as the best overall brand of spray equipment and is considered the *‘Overall Best’* brand among all paint-related products.” When it comes to making a choice, Graco is preferred 7 to 1 over the nearest competitive brand.

2008 Overall Best Brand of Spray Equipment



Frost & Sullivan, 2008 Paint Contractors Choice Award for Overall Best Brands

Most importantly, when choosing Graco, you can be assured that you are choosing the highest quality product in the industry. You can take pride in the fact that Graco products are designed, manufactured, and assembled right here in the United States of America.

We do!



The *G4* Difference... We Build It. We Back It. *Period.*



QUALITY | PERFORMANCE | WARRANTY | PRODUCTIVITY

Only Graco delivers the industry's first choice for texture sprayers, backed by a solid reputation for proven quality, maximum performance, reliable warranty coverage and unmatched on-the-job productivity. Graco sprayers are designed to exceed the professional texture contractor's standards for quality and performance. Graco is the name to turn to today and as your business grows.

PROVEN QUALITY

Precision design, 100% factory-tested and field-proven.

Cutting-edge technology keeps Graco sprayers up and running and on the job for years.

MAXIMUM PERFORMANCE

Every TexSpray™ model is designed to deliver maximum performance in real job conditions.

Rely on any of these high performance sprayers to deliver the results you expect from a Graco.

INDUSTRY LEADING WARRANTY

Every Graco texture sprayer is backed by our full 1-year warranty coverage against defects in materials and workmanship for the entire sprayer.

Sprayers so reliable you may never need to use the warranty!

UNMATCHED PRODUCTIVITY

Exclusive Endurance Pumps deliver long life, reliable performance and consistent spraying.

The Endurance Advantage Program eliminates downtime by keeping a spare pump on hand for a quick change-out on the job.

With the widest selection of texture models to choose from and a host of performance enhancing accessories, there is a TexSpray texture sprayer to help you complete your projects – no matter what finish you desire.

"The RTX 1500 has allowed me to expand my business into decorative and commercial finishing, thus opening up a wide array of options for future business. The fact that the RTX 1500 is both *portable and powerful* pays huge dividends!"



—Andy Polski
ALP Painting Corporation
Princeton, MN

**User supplied air compressor and Air Atomizer Kit [Part # 244223] required for this application.*

[†]External Air Kit [Part #287328] recommended for this application.

**Simulated Acoustic
[Popcorn]**



Orange Peel, Fine Splatter

Splatter



Knockdown

► Ceiling Spray Textures
Containing Polystyrene or
Vermiculite Aggregate
[Fine, Medium, Coarse]

- ▶ All-Purpose Joint Compounds
- ▶ Lightweight Joint Compounds
- ▶ Wall and Ceiling Spray Textures

- ▶ All-Purpose Joint Compounds
- ▶ Lightweight Joint Compounds
- ▶ Wall and Ceiling Spray Textures

- ▶ All-Purpose Joint Compounds
- ▶ Lightweight Joint Compounds
- ▶ Wall and Ceiling Spray Textures

Hopper Gun
RTX 650
RTX 900
RTX 1250
RTX 1500
GTX 2000EX
HTX 2030
10:1 President

Hopper Gun
RTX 650
RTX 900
RTX 1250
RTX 1500
GTX 2000EX
Mark IV*
Mark V*
Mark X 240 Volt*
5900 HD*
5900 HD Conver
7900 HD*
HTX 2030

Hopper Gun
RTX 650
RTX 900
RTX 1250
RTX 1500
GTX 2000EX
Mark IV*
Mark V*
Mark X 240 Volt*
5900 HD*
5900 HD Conver
7900 HD*
HTX 2030

Hopper Gun
RTX 650
RTX 900
RTX 1250
RTX 1500
GTx 2000EX
Mark IV*
Mark V*
Mark X 240 Volt*
5900 HD*
5900 HD Convertible*
7900 HD*
HTX 2030

Fine Finish Kit [Part #287227]
Use with RTX 1500, GTX 2000EX

Siphon Kit [Part #248112]
Use with GTX 2000EX

Air Line Kit [Part #248117]
Use with GTX 2000EX

Fine Finish Kit [Part #287227]
Use with RTX 1500, GTX 2000^{EX}

Siphon Kit [Part #248112]
Use with GTX 2000EX

Air Line Kit [Part #248117]
Use with GTX 2000EX

Air Atomizer Kit [Part #244223]
Use with Mark IV, Mark V, 5900 HD,
5900 HD Convertible, 7900 HD

25 Gallon Hopper [Part #287987]
Use with Mark IV, Mark V,
Mark X 240 Volt, 5900 HD,
5900 HD Convertible, 7900 HD
HTX 2030

55 Gallon Siphon Set [Part #289669]
Use with Mark X 240 Volt, 7900 HD

Fine Finish Kit [Part #287227]
Use with RTX 1500, GTX 2000EX

Siphon Kit [Part #248112]
Use with GTX 2000EX

Air Line Kit [Part #248117]
Use with GTX 2000EX

Air Atomizer Kit [Part #244223]
Use with Mark IV, Mark V, 5900 HD
25 Gallon Hopper [Part #287987]

**Use with Mark IV, Mark V,
Mark X 240 Volt, 5900 HD,
5900 HD Convertible, 7900 HD
HTX 2030**

55 Gallon Siphon Set [Part #289669]
Use with Mark X 240 Volt, 7900 HD

Air Line Kit [Part #248117]
Use with GTX 2000EX

Air Atomizer Kit [Part #244223]
Use with Mark IV, Mark V,
5900 HD

25 Gallon Hopper [Part #287987]
Use with Mark IV, Mark V,
Mark X 240 Volt, 5900 HD,
5900 HD Convertible, 7900 HD
HTX 2030

**55 Gallon
Siphon Set**
[Part #289669]
*Use with
Mark X 240 Volt,
7900 HD, HTX 2030*

Exterior Texture

Deck Coatings



- ▶ Decorative and Anti-Skid Deck Coatings

Hopper Gun
RTX 1500†
Use with aggregates up to 3 mm

Fine Finish Kit [Part #287227]
Use with RTX 1500, GTX 2000EX

External Air Kit [Part #287328]
Use with RTX 1500

[†]External Air Kit [Part #287328] recommended for this application.

SmartControl™ 2.0/WatchDog™

SMARTCONTROL™



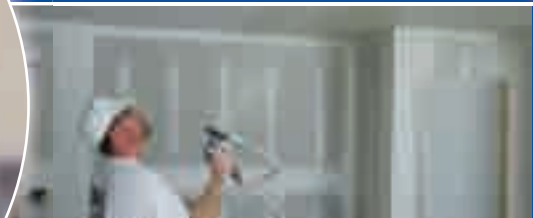
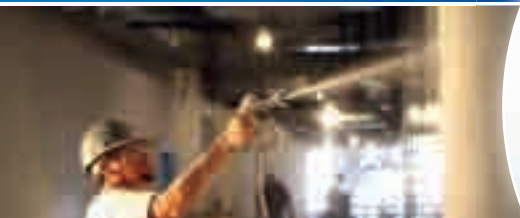
Graco's advanced **SmartControl 2.0** delivers a consistent spray fan without pressure fluctuation at all spraying pressures. Complete with digital display incorporating pressure readout, job/lifetime gallon counter, and self-diagnostics.

Select gas powered sprayers also include the **WatchDog Pump Protection System** which automatically shuts the sprayer down when the bucket is empty – extending the life of the pump.



MaxPower Motor

Graco's compact and powerful **MaxPower Brushless DC Motors** are designed specifically for airless applications. The totally-enclosed, fan-cooled design protects the internal components of the motor from dirt, dust and overspray – extending the life of the motor. But more importantly, the brushless design means that you will never need to replace brushes! No wonder Graco stands behind these motors with a lifetime warranty!



RotoFlex™ Pump

The **RotoFlex Pump** is designed to deliver smooth material flow for uniform coverage and a consistent spray pattern. It's unmatched durability with abrasive materials makes this texture pump like no other. Nothing gets the job done like this durable pump.



QuikReel™

Introducing **QuikReel**, the ultimate solution to hose management. With QuikReel you can reel and unreel up to 300 feet of hose in seconds! The hose is connected so you're always ready to spray. In fact, it comes connected out of the box. With Graco's innovative QuikReel, you can get on and off the job site faster.



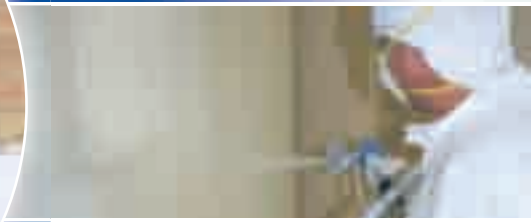
Endurance™ Pump

Graco's **Endurance Pump** is the most rugged and reliable pump on the market today. This field proven design with long-life **V-Max Blue™** packings, **Chromex™** and **MaxLife™** pump coatings, delivers superior reliability and life.



ProConnect™

The **ProConnect Pump Removal and Installation System** allows you to replace your pump in seconds *without any tools!* This revolutionary design keeps you pumping – saving you time and money.



FastFlush™

We did extensive research on how to decrease cleaning time and came to the following simple conclusion: *to clean faster, you must run the pump faster.* So that's what we did! The new **FastFlush Cleaning System** runs the motor at a higher speed which results in high flow and faster cleaning. It's that simple!



Advantage Drive™

The drive is the critical link between the motor and the pump. Graco doesn't leave the manufacturing of our **Advantage Drive System** to others, rather we design and manufacture them at our world-class manufacturing facility located in the United States. This allows us to control the quality of these hardened steel gears. You can find peace of mind knowing that you have the most durable, longest lasting drive in the industry and Graco stands behind it with a lifetime warranty.





Texture Hopper Gun

Texture Hopper Gun

DESCRIPTION

Texture Hopper Gun

PART #:

245924

INCLUDES:

- RTX Texture Spray Gun
- 4 mm, 6 mm, 8 mm, 12 mm Nozzles
- 1.5 gallon [5.7 liter] capacity heavy-duty plastic Hopper

Double-handle design provides maximum support and control for ceiling, wall and floor applications. Sprays acoustics, drywall mud, waterproofing materials, pool-deck sealant, stucco and most gravity-fed materials.

Lightweight Design

- ▶ Weights up to 35% less than comparable models
- ▶ Results in less operator fatigue

Angled 1½ Gallon Capacity

- ▶ Larger material capacity for longer spraying periods before refills

RTX Texture Spray Gun

- ▶ Conveniently located trigger adjustment allows fine turning of fluid output for a precise and consistent finish
- ▶ Allows a full trigger pull, providing the most comfortable grip on the handle
- ▶ Durable metal trigger

Comfort Grip

- ▶ Positioned inside the rear hopper handle the comfort grip allows even distribution of weight for better balance and reduced fatigue

Exclusive Hopper Clamp

- ▶ No tools needed to attach hopper to gun

Double-Handle Design

- ▶ Rotates 180° for maximum control when spraying ceilings, walls and floors
- ▶ Spill guard can be rotated back for ceiling applications, forward for floor applications



Thumb-wheel needle travel adjustment for consistent spray finish.

TexSpray RTX 650

The RTX 650 is the perfect pumping system for tradesmen and contractors who are ready to graduate from a hopper gun to a faster, more-productive, less-fatiguing spray rig.

Simple, Easy Operation

1. Fill hopper with up to 5 gallons of material
2. Connect your air compressor to the Air Spray Trigger gun
3. *Spray!*

Innovative Pump-Only Texture Sprayer*

- ▶ Small, lightweight and portable – easy to bring on and off the job site
- ▶ Eliminates the need for a heavy hopper attached to the gun
- ▶ Up to *5 times faster* than a traditional hopper gun
- ▶ **Designed for use with a user-supplied air compressor†**

RotoFlex II Texture Pump

- ▶ Delivers smooth material flow for uniform coverage and a consistent spray pattern
- ▶ Provides material flow rates up to .65 gpm for faster applications

Superior Texture Projection

- ▶ Pumping system force-feeds material through the texture gun and projects texture farther than a traditional hopper gun

Oversized Material Hopper

- ▶ Holds 5-gallons of material allowing you to complete a whole room without stopping to refill
- ▶ Specially shaped opening acts as a pail rest – just tip the pail over and let it drain into the hopper

Lightweight Spray Gun

- ▶ Allows material to be kept back at the pump so you're left to manage only the weight of the gun
- ▶ Ergonomically styled for comfortable spraying, regardless of project size

*Patent Pending

TexSpray RTX 650

DESCRIPTION
TexSpray RTX 650

PART #:
254973

SPECIFICATIONS:

MAX GPM [LPM]:	0.65 [2.5]
MAX PSI [BAR]:	50 [3.5]
MAX HOSE FT [M]:	20 [6]
MOTOR:	1.0 hp
HOPPER GAL [L]:	5 [19]

INCLUDES:

- Air Spray Trigger Gun
- 6 mm, 8 mm Nozzles
- 3/4 in x 20 ft [19 mm x 6 m] Material Hose



Steep sided hopper keeps mud flowing into the pump.



**User-supplied air compressor with minimum performance of 3.5 cfm [.10 cu m/min] at 40 psi [2.8 bar] required for most applications. See technical manual for full details, listed by application.*



TexSpray 900

TexSpray RTX 900

DESCRIPTION PART #:
TexSpray RTX 900 254974

SPECIFICATIONS:
MAX GPM [LPM]: 0.90 [3.4]
MAX PSI [BAR]: 60 [4.2]
MAX HOSE FT [M]: 25 [7.5]
MOTOR: 1.7 hp
HOPPER GAL [L]: 8 [30]

INCLUDES
• Air Spray Trigger Gun
• 3 mm, 4 mm, 6 mm, 8 mm Nozzles
• 3/4 in x 25 ft [19 mm x 7.5 m]
Bonded Air/Material Hose

The RTX 900 is the perfect choice for the small contractor who's looking to spray high-quality texture finishes with a simple-to-use, self-contained machine.

RotoFlex II Texture Pump

- Features an innovative braided sling that provides extra support to the RotoFlex pump tube
- Delivers smooth material flow for uniform coverage and a consistent spray pattern

Exclusive Dual-Use Gun

- Versatile, design converts quickly to a hopper gun for touch-up jobs
- Easy-to-use air trigger adjustments on the gun

High Capacity On-Board Air Compressor

- Projects material farther – *up to 4 feet!*
- Complete air-consuming splatter and orange peel finishes faster

Bonded Material/Air Hose

- Both hoses are permanently bonded together for easy handling
- No-tools hose connection with oversized grip

Large Capacity Hopper

- Holds 8-gallons of material for more time spraying between refills
- Ultra-low entry height of 32 in makes filling the hopper easier

Single Motor Design

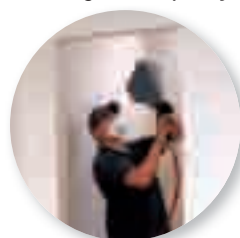
- One motor operates the pump and air compressor making the sprayer smaller and lighter
- Delivers 1.7 hp for optimal performance

Touch-Up Hopper

- Attaches to Air Spray Trigger gun without tools for completing quick jobs and touch-ups
- 3/4-gallon capacity



Convenient on-board tool box to hold all accessory items.



TexSpray 1250

The RTX 1250 is the full-featured choice of remodeling and general contractors who want to include texture finishing as part of their service offering.

RotoFlex II Texture Pump

- Features an innovative braided sling that provides extra support to the RotoFlex pump tube
- Delivers smooth material flow for uniform coverage and a consistent spray pattern

Adjustable Material Flow Control

- Dial up to spray thicker material at a high production rate; dial down for more control on orange peel or splatter jobs or in tight areas
- Easy-to-read gauges

High Capacity On-Board Air Compressor

- Projects material farther
- Complete air-consuming splatter and orange peel finishes faster

Large Capacity Hopper

- Holds 10-gallons of material for more time spraying between refills
- Ultra-low entry height of 34 inches makes filling the hopper easier

Bonded Material/Air Hose

- Both hoses are permanently bonded together for easy handling
- No-tools hose connection with oversized grip

QuikChange™ Pump Section

- No tools pump removal and replacement
- Changes in less than five minutes

Exclusive Dual-Use Gun

- Versatile, design converts quickly to a hopper gun for touch-up jobs
- Easy-to-use air trigger adjustments on the gun



TexSpray RTX 1250

DESCRIPTION
TexSpray RTX 1250

PART #:
254975

SPECIFICATIONS:

MAX GPM [LPM]:	1.25 [4.7]
MAX PSI [BAR]:	70 [4.9]
MAX HOSE FT [M]:	25 [7.5]
MOTOR:	1.7 hp
HOPPER GAL [L]:	10 [38]

INCLUDES

- Air Spray Trigger Gun
- 3 mm, 4 mm, 6 mm, 8 mm Nozzles
- 3/4 in x 25 ft [19 mm x 7.5 m] Bonded Air/Material Hose



Adjustable material flow control.



TexSpray RTX 1500

TexSpray RTX 1500

DESCRIPTION PART #:
TexSpray RTX 1500 248201

SPECIFICATIONS:
MAX GPM [LPM]: 2.0 [7.5]
MAX PSI [BAR]: 100 [7.0]
MAX HOSE FT [M]: 100 [30]
MOTOR: 2.0 hp
HOPPER GAL [L]: 15 [56.8]

INCLUDES:
• Heavy-Duty Trigger Gun
• 3 mm, 4 mm, 6 mm, 8 mm, 10 mm, 12 mm Nozzles
• 1 in x 25 ft [25.4 mm x 7.5 m] Bonded Air/Material Hose

The RTX 1500 is packed with innovative features and performance points – designed for the professional texture contractor.

RotoFlex HD Texture Pump

- ▶ 2.0 gpm output gets the job done quickly
- ▶ 100 psi material pressure allows longer hose lengths, minimizing time spent moving the sprayer
- ▶ Large, 7/8-inch ID pump tube passes large particles easily



Automatic Pressure Unloader

- ▶ Ensures a soft start with each trigger pull
- ▶ Eliminates the material blast that can impact finish quality
- ▶ Results in less material waste and less clean up
- ▶ Dramatically extends pump life

High-Output Air Compressor

- ▶ Produces 6.5 cfm at 45 psi
- ▶ Projects texture farther
- ▶ Maximum 10.2 cu ft/min displacement for long life

Large Capacity Hopper

- ▶ 15-gallon capacity
- ▶ No-tools removal for easy clean up
- ▶ Steep sided to keep thick muds flowing to the pump

QuikChange Pump Section

- ▶ No-tools pump removal and replacement
- ▶ Changes in less than 5 minutes

Bonded Material/Air Hose

- ▶ Both hoses are permanently bonded together for easy handling
- ▶ No-tools hose connection with oversized grip

Air Spray Heavy-Duty RTX 1500 Trigger Gun

- ▶ Durable cast aluminum design
- ▶ Oversized fluid passages for pumping heavy mud mixes and larger aggregate sizes
- ▶ Non-bleeder design shuts air flow off each time trigger is closed
- ▶ Extra-coarse gun head threads for quick nozzle changes



Single motor operates both the pump and the compressor.

TexSpray GTX 2000^{EX}

The GTX 2000^{EX} is the perfect pumping system for the professional texture contractor who has access to a high-output air compressor. With unmatched performance and durability, it can easily apply common interior drywall mud finishes such as orange peel, splatter and knockdown, or the more demanding deck coatings and exterior aggregate acrylic and elastomeric finishes.

Husky™ 1040 Double Diaphragm Pump

- ▶ Durable Geolast™ ball check valves
- ▶ High-output, 1 inch pump produces texture delivery rates to 4.0 gpm

Air Spray Heavy-Duty GTX 2000^{EX} Trigger Gun

- ▶ Durable cast aluminum design
- ▶ Oversized fluid passages for pumping heavy mud mixes and larger aggregate sizes
- ▶ Extra-coarse gun head threads for quick nozzle changes

Largest Capacity Hopper

- ▶ 17-gallon capacity
- ▶ No-tools removal for easy clean up
- ▶ Steep sided to keep the thickest muds flowing to the pump



Separate Pump/Gun Air Controls

- ▶ One regulator controls pump pressure and output, another controls atomization air
- ▶ Enables you to produce precise, consistent and repeatable texture finishes

On-Board Air Filtration

- ▶ Auto-drain design automatically removes moisture build-up
- ▶ Filters incoming air to keep your sprayer running at optimal performance



Bonded Material/Air Hose

- ▶ Both hoses are permanently bonded together for easy handling
- ▶ No-tools hose connection with oversized grip



TexSpray GTX 2000^{EX}

DESCRIPTION
TexSpray GTX 2000^{EX}

PART #:
257030

SPECIFICATIONS:

MAX GPM [LPM]:	4.0 [15.1]*
MAX PSI [BAR]:	120 [8.3]
MAX HOSE FT [M]:	100 [30]
HOPPER GAL [L]:	17 [64.3]

INCLUDES:

- Air Spray Trigger Gun
- 3 mm, 4 mm, 6 mm, 8 mm, 10 mm, 12 mm Nozzles
- 1 in x 25 ft [25.4 mm x 7.5 m] Bonded Air/Material Hose



Optional siphon kit draws from your mix container.

**User-supplied air compressor with minimum performance of 12 cu ft/min [.34 cu m/min] at 100 psi [6.9 bar] recommended.*



TexSpray Mark IV/Mark V *Premium*

TexSpray Mark IV *Premium*

DESCRIPTION
TexSpray Mark IV

PART #:
258729

SPECIFICATIONS:

MAX TIP SIZE: .033

MAX GPM [LPM]: 1.10 [4.1]

MAX PSI [BAR]: 3300 [227]

MOTOR: 2.2 hp Brushless DC

INCLUDES:

- Flex Plus™ Gun
- LTX425 SwitchTip and Guard
- 3/8 in x 100 ft [9.5 mm x 30 m] BlueMax II Airless Hose
- 1/4 in x 3 ft [6.4 mm x 0.9 m] Whip Hose



Introducing the latest advancement in electric airless/texture sprayers – the **Mark IV** and **Mark V *Premium*** line from Graco. Designed to save time and money, both sprayers now offer higher performance points as well as valuable, must-have features for the serious professional contractor. Whether you need to spray skim coat in a Level 5 finish, drywall mud in an orange peel, splatter or knockdown finish or even the wide range of primers and paint, these sprayers can do it all! When it comes to quality finish and unmatched durability, count on Graco and the Mark IV and Mark V *Premium* line of sprayers to get the job done!

Specially Designed, Submerged Foot Valve

- ▶ Uniquely designed with Max Flo™ fluid passages and large ball check to efficiently load thick and heavy materials
- ▶ Foot valve is placed low to the ground, submerging it in the material bucket

NEW FastFlush Cleaning System

- ▶ Activated by simply rotating the prime valve into the FastFlush position – fully automated!
- ▶ Innovative system runs the pump at high speed to reduce your cleaning time

Features Include:

- ▶ **SmartControl 2.0 Digital Display**
- ▶ **Endurance Pump**
 - Chromex rod and hardened Stainless Steel sleeve
- ▶ **ProConnect Pump Removal System**
[on Mark V sprayer only]

NEW On-Board Toolbox

- ▶ Convenient storage container for tools, tips, filters and accessories





NEW QuikReel [Patent Pending]

Introducing the new QuikReel, the ultimate solution in hose management. This field-proven design, will get you on and off the job faster – saving you time and money. With the capability to handle up to 300 feet of hose, the QuikReel system allows you to put the sprayer where you want it and the gun where you need it – *maximizing your productivity.*

- ▶ Integrated hose reel can be reeled/unreeled in seconds
- ▶ Hose is always connected so that you're always ready to spray
- ▶ Hose guide directs the hose on the reel eliminating twisting and coiling
- ▶ Easily handles larger diameter and longer lengths of hose – maximizing your performance and productivity
- ▶ Heavy-duty swivel with EasyGlide™ technology is jobsite tested – ensuring long life and trouble free operation

**Comes
READY TO SPRAY
with gun and hose attached.
NOW WITH 100 FEET
OF HOSE!**



TexSpray Mark V Premium

DESCRIPTION
TexSpray Mark V

PART #:
258730

SPECIFICATIONS:

MAX TIP SIZE: .039

MAX GPM [LPM]: 1.35 [5.1]

MAX PSI [BAR]: 3300 [227]

MOTOR: 2.8 hp Brushless DC

INCLUDES:

- Heavy-Duty Texture Gun
- LTX531, LTX427 SwitchTips and Guard
- 3/8 in x 100 ft [9.5 mm x 30 m] BlueMaxII Airless Hose
- 1/4 in x 3 ft [6.4 mm x 0.9 m] Whip Hose



Fast Flush.

SMARTCONTROL™

PRO CONNECT

**ENDURANCE
ADVANTAGE
PROGRAM**



TexSpray Mark X 240 Volt™

TexSpray Mark X 240 Volt

DESCRIPTION
TexSpray Mark X 240 Volt

PART #:
255914

SPECIFICATIONS:

MAX TIP SIZE: .045

MAX GPM [LPM]: 2.1 [8.0]

MAX PSI [BAR]: 3300 [227]

MOTOR: 4.0 hp Brushless DC



Connects to standard 220-240 volt L6-30 receptacle [3 wire] on most distribution boxes or generators.



Exclusive ProConnect System – no-tools removal for fast repairs on the job.



The most powerful electric airless/texture sprayer – period!

The TexSpray Mark X 240 Volt is our largest electric airless/texture unit to date. With nearly double the output of the Mark V, it is the sprayer of choice for serious professional contractors who take advantage of the 240 volt power available at the construction site or with a generator. A true powerhouse, it can easily spray skim coat in a Level 5 finish and drywall mud in an orange peel, splatter or knockdown finish. It can even apply the whole range of primers and paints.

Proven Endurance Pump

- ▶ Oversized clearances ensure minimal pressure drop and surge-free performance
- ▶ Exclusive MaxLife sleeve and Chromex rod deliver unmatched durability and life

Specially Designed, Submerged Foot Valve

- ▶ Uniquely designed with Max Flo fluid passages and large ball check to efficiently load thick and heavy materials
- ▶ Foot valve is placed low to the ground, submerging it in the material bucket

MaxPower Brushless DC Motor

- ▶ No brushes to replace
- ▶ Compact, lightweight motor delivers higher horsepower per wall amp
- ▶ Enclosed design protects internal motor components from dirt, dust and overspray, extending motor life



SmartControl 2.0 Pressure Control

- ▶ Precise spray-pressure control through the full range – from 400 psi to 3300 psi
- ▶ Higher spray pressures give you the power to spray tough coatings and run long hose lengths

ProConnect

- ▶ No-tools removal and installation for fast repairs, right on the job
- ▶ No-tool hose connection

Chrome-Plated, Welded-Steel Hi-Boy Cart

- ▶ Integrated hose rack with retractable handle
- ▶ Lift handles provide convenient grab points
- ▶ Hi-Boy TiltBack™ cart design
- ▶ Tubed pneumatic tires roll easily on all surfaces

TexSpray 5900 HD *Convertible*

The **TexSpray 5900 HD *Convertible*** is our most versatile airless/texture sprayer to date. This gas/electric sprayer gives the contractor indoor/outdoor flexibility to get the job done. Its job-proven capabilities enable it to spray skim coat in a Level 5 finish, and drywall mud in an orange peel, splatter or knockdown finish. It can even apply the whole range of primers and paints.

ProConnect System

- ▶ No-tools removal and installation for fast repairs, right on the job
- ▶ No-tool hose connection



Convertible Power – Electric/Gas

- ▶ No-tools change out system is easy to use
- ▶ Self-tensioning belt for long life
- ▶ 2.0 hp TEFC DC motor delivers the power

Specially Designed, Submerged Foot Valve

- ▶ Uniquely designed with Max Flo fluid passages and large ball check to efficiently load thick and heavy materials
- ▶ Foot valve is placed low to the ground, submerging it in the material bucket

SmartControl 2.0 Pressure Control

- ▶ Precise spray-pressure control through the full range – from 400 psi to 3300 psi
- ▶ Higher spray pressures give you the power to spray tough coatings and run long hose lengths

Endurance Pump

- ▶ Oversized clearances ensure minimal pressure drop and surge-free performance
- ▶ Long-life Chromex rod and V-Max Blue packings

TexSpray 5900 HD *Convertible*

DESCRIPTION	PART #:
5900 HD Convertible	255630
5900 HD Convertible with Electric Motor Kit [Non CSA]	255631
5900 HD Convertible with CSA Electric Motor Kit	255954

SPECIFICATIONS:

MAX TIP SIZE:	.043
MAX GPM [LPM]:	1.6 [6.0]
MAX PSI [BAR]:	3300 [227]
HONDA ENGINE:	160 cc

SPECIFICATIONS WITH ELECTRIC MOTOR:

MAX TIP SIZE:	.031
MAX GPM [LPM]:	1.1 [4.2]

INCLUDES:

- Heavy-Duty Texture Gun
- LTX531, LTX427 SwitchTips and Guard
- 3/8 in x 50 ft [9.5 mm x 15 m] BlueMax II Airless Hose
- 1/4 in x 3 ft [6.4 mm x 0.9 m] Whip Hose



Large capacity hopper available for either electric or gas sprayer.

SMARTCONTROL™

PRO CONNECT

**ENDURANCE
ADVANTAGE
PROGRAM**



TexSpray 5900 HD/7900 HD *Premium*

TexSpray 5900 HD

DESCRIPTION
TexSpray 5900 HD

PART #:
258734

SPECIFICATIONS:

MAX TIP SIZE: .043

MAX GPM [LPM]: 1.6 [6.0]

MAX PSI [BAR]: 3300 [227]

HONDA ENGINE: 160 cc

INCLUDES:

- Heavy-Duty Texture Gun
- LTX531, LTX427 SwitchTips and Guard
- 3/8 in x 100 ft [9.5 mm x 30 m] BlueMax II Airless Hose
- 1/4 in x 3 ft [6.4 mm x 0.9 m] Whip Hose



Welcome to a new world of versatile gas powered airless/texture sprayers with the **TexSpray 5900 and 7900 HD *Premium*** line from Graco. Built for the way you work, these sprayers now come configured with breakthrough, must-have features that are designed to save both time and money for the serious professional contractor. Whether you need to spray skim coat in a Level 5 finish, drywall mud in an orange peel, splatter or knockdown finish or even the wide range of primers, paints and other heavy coatings, these sprayers can do it all. Doing the job just got easier with Graco!

Specially Designed, Submerged Foot Valve

- ▶ Uniquely designed with Max Flo fluid passages and large ball check to efficiently load thick and heavy materials
- ▶ Foot valve is placed low to the ground, submerging it in the material bucket

SmartControl 2.0 Pressure Control

- ▶ Precise spray-pressure control through the full range – from 400 to 3300 psi
- ▶ Higher spray pressures give you the power to spray tough coatings and run long hose lengths

WatchDog Pump Protection System

- ▶ Automatically shuts the pump off when material runs out
- ▶ Prevents dry pumping damage

Features Include:

- ▶ **Endurance Pump**
 - Exclusive MaxLife sleeve and Chromex rod [on 7900 HD sprayer only]
 - Long-life Chromex rod and hardened Stainless Steel sleeve [on 5900 HD sprayer only]
- ▶ **ProConnect Pump Removal System**
- ▶ **Advantage Drive System**
- ▶ **Easy Out Pump Filter**

NEW On-Board Toolbox

- ▶ Convenient storage container for tools, tips, filters and accessories



Exclusive ProConnect System – no-tools removal for fast repairs on the job.

NEW QuikReel [Patent Pending]

Introducing the new QuikReel, the ultimate solution in hose management. This field-proven design, will get you on and off the job faster – saving you time and money. With the capability to handle up to 300 feet of hose, the QuikReel system allows you to put the sprayer where you want it and the gun where you need it – *maximizing your productivity.*

- ▶ Integrated hose reel can be reeled/unreeled in seconds
- ▶ Hose is always connected so that you're always ready to spray
- ▶ Hose guide directs the hose on the reel eliminating twisting and coiling
- ▶ Easily handles larger diameter and longer lengths of hose – maximizing your performance and productivity
- ▶ Heavy-duty swivel with EasyGlide technology is jobsite tested – ensuring long life and trouble free operation



TexSpray 7900 HD

DESCRIPTION
TexSpray 7900 HD

PART #:
258735

SPECIFICATIONS:

MAX TIP SIZE: .048
MAX GPM [LPM]: 2.2 [8.3]
MAX PSI [BAR]: 3300 [227]
HONDA ENGINE: 200 cc

INCLUDES:

- Heavy-Duty Texture Gun
- LTX531, LTX427 SwitchTips and Guard
- 3/8 in x 100 ft [9.5 mm x 30 m] BlueMax II Airless Hose
- 1/4 in x 3 ft [6.4 mm x 0.9 m] Whip Hose

**Comes
READY TO SPRAY**
with gun and hose attached.
**NOW WITH 100 FEET
OF HOSE!**



SMARTCONTROL™



PRO CONNECT





TexSpray HTX™ 2030—*Complete*

TexSpray HTX 2030 *Complete*

DESCRIPTION **PART #:**
HTX 2030—Complete **258740**

For exterior aggregate and smooth finishes as well as common interior texture finishes such as orange peel, splatter, knockdown and simulated acoustic.

SPECIFICATIONS:

MAX TIP SIZE: .071

MAX GPM [LPM]: 3.0 [11]

MAX PSI [BAR]: 1000 [70]

HONDA ENGINE: 200 cc

INCLUDES:

- High-Output Piston Texture Pump
- FreeFlo™ Inline Gun
- RAC X 671 Airless Tip and Guard
- 3/4 in x 50 ft [19 mm x 15 m] Hose
- 55 Gallon Suction Set
- Fine Finish Kit with 1/8 in, 1/4 in, 5/16 in and 3/8 in Nozzles
- 4 mm, 6 mm, 8 mm, 10 mm Nozzles

The all new TexSpray HTX 2030 is Graco's most powerful and versatile texture sprayer to date. Designed for today's demanding exterior aggregate and smooth coatings, the HTX 2030 offers extreme durability and simple operation. Capable of applying exterior smooth and aggregate textures, elastomerics, and acrylic materials, it can also spray drywall mud in an orange peel, splatter or knockdown finish. Combine this with the available MaxLife Endurance High Pressure Pump and you can spray a wide variety of interior and exterior smooth materials including primers and paints.



TexSpray HTX 2030—Complete

Part #: 258740

TexSpray HTX 2030—Complete PLUS+

Part #: 258741

TEXTURE APPLICATIONS: Get the interior and exterior texture finish you want with aggregate size up to 2.5 mm!



= TexSpray HTX 2030—Complete



= TexSpray HTX 2030—Complete PLUS+



Tool-less ProConnect Pump System allows you to change pumps in seconds!

/HTX 2030—*Complete Plus+*

High-Output Texture Pump

- ▶ Uniquely designed pump with extra large passages allows pumping aggregated materials up to 2.5 mm
- ▶ No-tools hose connections at pump and gun
- ▶ Innovative soft seal in the foot valve ensures consistent and optimal performance
- ▶ Produces delivery rates to 3.0 gpm at 1000 psi for time-saving production rates
- ▶ Easily sprays smooth and aggregate textures, elastomerics and acrylic materials



PowerFlo™ Control System

- ▶ Innovative design remotely stops and starts material flow right at the pump, eliminating the need for a downstream valve



Remote on/off switch electronically engages pump, eliminating the need for a gun valve.

- ▶ Offers a smooth, controlled material flow to prevent pack-out conditions
- ▶ Ensures a soft start, eliminating the material blast that can impact finish quality
- ▶ Full-range flow control from .6 to 3 gpm

Exclusive StraightThru™ Fluid Path

- ▶ StraightThru design eliminates turns and corners from pump to gun
- ▶ Puts less stress on material to virtually eliminate pack-out conditions
- ▶ Enables the spraying of today's more demanding and aggressive aggregate materials

Wide Variety of Applicators

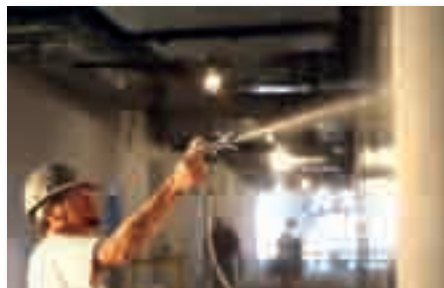
- ▶ **NEW** FreeFlo™ Inline Gun offers oversized, unobstructed fluid passages to provide maximum flow
- ▶ Sprays air-assisted in either a round pattern or wide fan pattern for fast, consistent material coverage
- ▶ **NEW** 3 ft Pole Gun* offers extended reach to minimize repositioning of lifts and ladders [patent pending]
- ▶ **NEW** Flex Head Pole Gun* offers greater control in tight areas, such as on scaffolding and around architectural detail
- ▶ Both new pole guns can spray in a wide fan pattern — *an industry first!*



*Sold Separately

Exclusive Convert-A-Pump™ System [Included with HTX 2030—*Complete PLUS+*]

- ▶ Innovative system allows user to convert unit to a high pressure airless sprayer for applying the wide range of heavier smooth coatings including skim coat in a Level 5 finish, primers and paints
- ▶ System automatically recognizes installed pump and converts it to an airless sprayer
- ▶ Allows you to upgrade your TexSpray HTX 2030—*Complete* to a TexSpray HTX 2030—*Complete Plus+* at any time [with the MaxLife Endurance High-Pressure Pump Kit #24B140] to expand your job capabilities



One machine can complete all your interior and exterior jobs!

TexSpray HTX 2030 *Complete Plus+*

DESCRIPTION **PART #:**
HTX 2030—*Complete Plus+* **258741**

For exterior aggregate and smooth finishes as well as common interior texture finishes. Can also airlessly apply the wide range of heavier smooth coatings, Level 5, primers and paints.

SPECIFICATIONS:

MAX TIP SIZE: .071

MAX GPM [LPM]: 3.0 [11]

MAX PSI [BAR]: 1000 [70]

HONDA ENGINE: 200 cc

INCLUDES:

- High-Output Piston Texture Pump
- FreeFlo Inline Gun
- RAC X 671 Airless Tip and Guard
- 3/4 in x 50 ft [19 mm x 15 m] Hose
- 55 Gallon Suction Set
- Fine Finish Kit with 1/8 in, 1/4 in, 5/16 in and 3/8 in Nozzles
- 4 mm, 6 mm, 8 mm, 10 mm Nozzles

PLUS+:

- MaxLife Endurance High Pressure Airless Pump
- Heavy-Duty Texture Gun
- RAC X 643 Airless Tip and Guard
- 3/8 in x 50 ft [9.5 mm x 15 m] BlueMax II Airless Hose
- 1/4 in x 3 ft [6.4 mm x .9 m] Whip Hose

SMARTCONTROL™

PRO CONNECT





10:1 President

10:1 President

DESCRIPTION
10:1 Carbon Steel Complete

PART #:
225886

SPECIFICATIONS:

MAX GPM [LPM]: 3.0 [11]

MAX PSI [BAR]: 1000 [70]

MAX HOSE FT [M]: 200 [61]

INCLUDES:

- Heavy-Duty Air Spray Gun
- 6 mm Nozzle
- 3/8 in x 25 ft [9.5 mm x 7.5 m] Air Hose
- 3/4 in x 25 ft [19 mm x 7.5 m] Air Hose
- 3/4 in x 25 ft [19 mm x 7.5 m] High Pressure Material Hose

DESCRIPTION
10:1 Carbon Steel Complete
10:1 SST Complete

PART #:
225877
987429

SPECIFICATIONS:

MAX GPM [LPM]: 3.0 [11]

MAX PSI [BAR]: 1000 [70]

MAX HOSE FT [M]: 200 [61]

INCLUDES:

- Heavy-Duty Air Spray Gun
- 6 mm Nozzle
- 3/8 in x 100 ft [9.5 mm x 30 m] Air Hose
- 3/4 in x 25 ft [19 mm x 7.5 m] Air Hose
- 3/4 in x 50 ft [19 mm x 15 m] High Pressure Material Hose
- 1 in x 50 ft [25 mm x 15 m] High Pressure Material Hose

DESCRIPTION
10:1 SST Bare

PART #:
954088

SPECIFICATIONS:

MAX GPM [LPM]: 3.0 [11]

MAX PSI [BAR]: 1000 [70]

MAX HOSE FT [M]: 200 [61]

The 10:1 President is a time-tested, air-operated texture sprayer that pumps directly from your material drum.

Even-Flo® Valve

- ▶ Provides smooth, even material flow for the most consistent finish quality
- ▶ Includes air regulators and pressure gauges for easy setup and operation

Relax-A-Valve

[Carbon Steel Model Only]

- ▶ Ensures a soft start with easy trigger pull
- ▶ Eliminates the material blast that can impact finish quality

High-Output Piston Pump

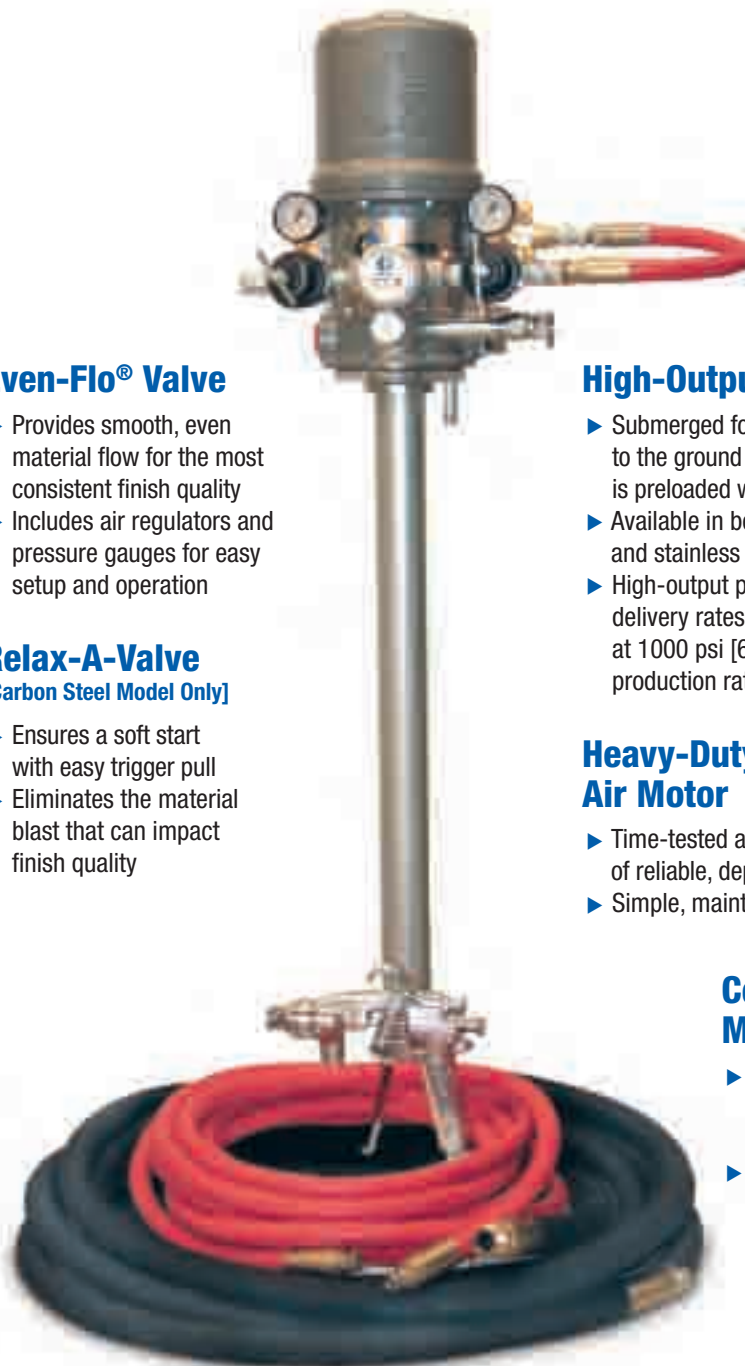
- ▶ Submerged foot valve is placed low to the ground to ensure the pump is preloaded with material
- ▶ Available in both carbon steel and stainless steel
- ▶ High-output pump produces texture delivery rates to 3.0 gpm [11 lpm] at 1000 psi [69 bar] for time-saving production ratios

Heavy-Duty Graco Air Motor

- ▶ Time-tested air motor delivers years of reliable, dependable operation
- ▶ Simple, maintenance-free design

Convenient Drum Mount Set-Up

- ▶ Mounts directly to your material container, saving space in your truck or on the job
- ▶ Carbon steel units can be used in open or closed head drums



Even-Flo Valve convenient for balancing of air and fluid pressures to deliver a high quality finish.

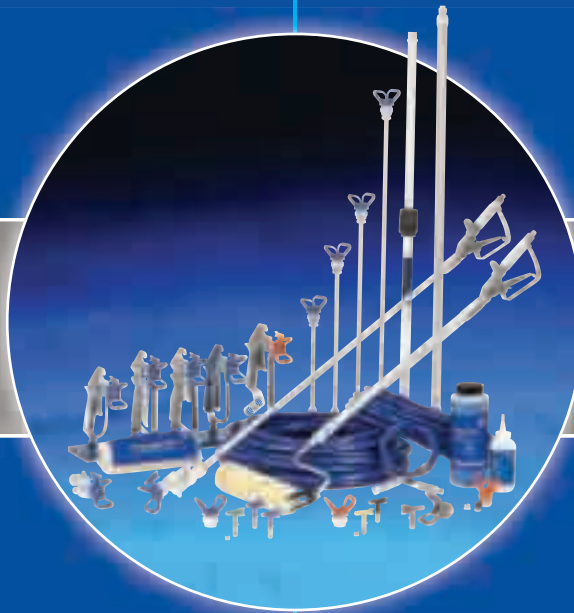
RAC X SwitchTip

The **RAC X SwitchTip** is a high-performance spray tip used for residential and commercial applications. With a large selection of tip sizes available we are sure to have one to fit your needs. RAC X provides excellent fan pattern life and a high quality finish. Graco tips are the most widely used reversible spray tips on the market today!



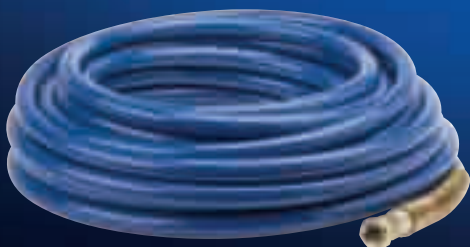
Heavy-Duty Texture Gun

The **Heavy-Duty Texture Gun** is known for its unique design with large fluid passages, heavy-duty spring and 4-finger trigger that makes this gun ideal for high solids, smooth texture, mastics and protective coatings. This is the gun of choice for airless texture spraying applications.



BlueMax II Hose

To maximize performance, choose the high performance **BlueMax II Airless Hose**. Lighter weight and increased hose flexibility improves usability while spraying under pressure. With superior flexibility and durability, BlueMax II is designed to ensure you get the best results from your airless sprayer.



Pump Armor™/TSL

Maintaining your pump is essential for long life and reliability. Graco has made pump maintenance simple with our complete line of fluids. **Pump Armor** is a storage solution which protects your pump from the damaging effects of corrosion during storage. **TSL (Throat Seal Liquid)** prevents dried paint from accumulating on the pump rod – extending the life of the pump packings.





288629	RTX 650 Air Spray Trigger Gun
288628	RTX 900/1250 Air Spray Trigger Gun
248091	RTX 1500 Air Spray Trigger Gun with threaded hose connection
248093	Air Spray Trigger Gun with threaded hose connection <ul style="list-style-type: none">▶ Replacement gun for Compact HP and GTX 2000Ex series sprayers.
287328	RTX 1500 External Air Kit <ul style="list-style-type: none">▶ Connect a separate air compressor for increased atomization energy.

190943	3/16 in [5 mm] Nozzle	190945	5/16 in [8 mm] Nozzle
190944	1/4 in [6 mm] Nozzle	190946	3/8 in [9.5 mm] Nozzle

234153 Spray Nozzle Kit
▶ Includes 1 each of 4 mm, 6 mm, 8 mm and 12 mm nozzles.



15C883	3 mm Nozzle	15C886	8 mm Nozzle
15C884	4 mm Nozzle	15C887	10 mm Nozzle
15C885	6 mm Nozzle	15C888	12 mm Nozzle



287227 Fine Finish Kit
 ▶ Includes fine finish adapter and 1 each of 1/8 in [3.2 mm], 1/4 in [6.4 mm], 5/16 in [8 mm] and 3/8 in [9.5 mm] spray discs.

288622	RTX 650 Hose ▶ Clear Braided Hose Kit: 3/4 in x 20 ft [19 mm x 6 m] Fluid Hose
234147	RTX 900 and 1250 Hose ▶ Clear Braided Hose Kit: 3/4 in x 25 ft [19 mm x 7.5 m] Fluid Hose and 3/8 in x 25 ft [9.5 mm x 7.5 m] Air Hose
	RTX 1500, EXT and GTX 2000 Series Hose with Threaded Connections
287304	▶ Clear Braided Hose Kit: 1 in x 25 ft [25.4 mm x 7.5 m] Fluid Hose and 3/8 in x 25 ft [9.5 mm x 7.5 m] Air Hose
287305	▶ Clear Braided Hose Kit: 1 in x 50 ft [25.4 mm x 15 m] Fluid Hose and 3/8 in x 50 ft [9.5 mm x 15 m] Air Hose
287306	▶ Clear Braided Hose Kit: 1.25 in x 25 ft [32 mm x 7.5 m] Fluid Hose and 3/8 in x 25 ft [9.5 mm x 7.5 m] Air Hose
287307	▶ Clear Braided Hose Kit: 1.25 in x 50 ft [32 mm x 15 m] Fluid Hose and 3/8 in x 50 ft [9.5 mm x 15 m] Air Hose

238807	3 ft [1 m] Pole Gun with Threaded Hose Connection [Not for use with RTX model sprayers.]
238080	Flex Head Gun with Threaded Hose Connection [Not for use with RTX model sprayers.]
287192	Clear Braided Hose Kit: 1 in x 25 ft [25.4 mm x 7.5 m] Fluid Hose and 3/8 in x 25 ft [9.5 mm x 7.5 m] Air Hose
287194	Clear Braided Hose Kit: 1 in x 50 ft [25.4 mm x 15 m] Fluid Hose and 3/8 in x 50 ft [9.5 mm x 15 m] Air Hose
287195	Clear Braided Hose Kit: 1.25 in x 25 ft [32 mm x 7.5 m] Fluid Hose and 3/8 in x 25 ft [9.5 mm x 7.5 m] Air Hose
287196	Clear Braided Hose Kit: 1.25 in x 50 ft [32 mm x 15 m] Fluid Hose and 3/8 in x 50 ft [9.5 mm x 15 m] Air Hose

Essential Tools for *Maximum* Productivity and Performance



ADDITIONAL ACCESSORIES

- 118487 Cam-Lock Kit
 - ▶ For converting an air spray gun with threaded connection to a cam-lock connection.
- 287337 Cam-Lock Kit
 - ▶ For converting a hose with threaded connection to a cam-lock connection.
- 248112 GTX 2000 Series Siphon Kit
 - ▶ For pumping directly from your mix container.
- 248117 GTX 2000 Series Air Line Kit
 - ▶ For remote operation of the GTX 2000ex air compressor.

GUNS

- 246468 Mark IV Flex Plus Gun
- 241705 Mark V, 5900 HD, 7900 HD Heavy-Duty Texture Gun
- 245820 Inline Heavy-Duty Texture Gun



GUN HOSE KITS

- 241338 Mark V/5900 HD/7900 HD Texture Gun Hose Kit with 531 RAC X SwitchTip
 - ▶ 3/8 in x 50 ft [9.5 mm x 15 m] 3300 psi Hose, 1/4 in x 3 ft [25 mm x 0.9 m] 3300 psi Whip Hose, Couplers and additional 427 RAC X SwitchTip
- 289585 Inline Heavy-Duty Texture Gun Hose Kit with LTX643 SwitchTip
 - ▶ 1/2 in x 50 ft [13 mm x 15 m] 4000 psi Hose, 3/8 in x 12 ft [9.5 mm x 3.6 m] Whip Hose, Swivel and Fittings



HOPPER

- 287987 25 Gallon [95 Liter] Texture Hopper
 - ▶ Directly connects to Mark IV, Mark V, Mark X 240 Volt, 5900 HD, 5900 Convertible and 7900 HD.
- 243380 Cam-Lock Hose Adapter
 - ▶ Connects the texture hopper to the GMAX II 7900, 1030 FC units or HTX 2030 sprayers.



ADDITIONAL ACCESSORIES

- 248515 Sponge Ball Clean-Out Kit: For 1 in [25 mm] ID Hose.
- 244052 Heavy-Duty Texture Gun Air Atomizer Kit with Air Hose
 - ▶ Minimum air compressor rating of 15 cfm at 90 psi.
- 244223 Heavy-Duty Texture Gun Air Atomizer Kit without Air Hose
 - ▶ Minimum air compressor rating of 15 cfm at 90 psi.
- 289669 55 Gallon Siphon Kit for Mark X 240 Volt, 7900 HD
- 15T647 50 ft [15 m] Extension Cord for Mark X 240 Volt



Air Atomizer Kit Part #244052
*Attaches to Heavy-Duty Texture or Flex Guns
 [Shown on Heavy-Duty Texture Gun].*

*Ask your local authorized Graco Distributor
 for details on our complete line of airless
 accessories.*

**HTX 2030-COMplete,
HTX 2030-COMplete
PLUS+**



**1030 FC,
PRESIDENT 10:1**

24B327	FreeFlo Inline Gun with 4, 6, 8, 10 mm Nozzles, 18 and 30 Mesh Filters, RAC X 671 Tip and Guard
24B944	Pole Gun 3 ft [1 m] with 6 mm, 8 mm, 9.5 mm, 11 mm, 13 mm Nozzles, Cap, Fine Finish Adapter
24B945	Flex Head Gun with 6 mm, 8 mm, 9.5 mm, 11 mm, 13 mm Nozzles, Cap, Fine Finish Adapter
241705	Heavy-Duty Texture Gun

Nozzle Size	Exterior Aggregate Material
3 mm	up to 1.0 mm [maximum]
4 mm	up to 1.25 mm [maximum]
5 mm	up to 1.5 mm [maximum]
6 mm	up to 2.0 mm [maximum]
8 mm	up to 2.5 mm [maximum]
9.5 mm	up to 2.5 mm [maximum]
10 mm	up to 2.5 mm [maximum]
11 mm	up to 2.5 mm [maximum]
13 mm	up to 2.5 mm [maximum]
14 mm	up to 2.5 mm [maximum]

Nozzle Size	Interior Smooth Material
3 mm	Fine Finish Orange Peel/Fog
4 mm	Fine Finish Orange Peel/Fog
5 mm	Orange Peel, Small Splatter
6 mm	Orange Peel, Small Splatter
8 mm	Splatter, Small to Medium Knockdown
9.5 mm	Acoustics/Popcorn, Splatter, Medium Knockdown
10 mm	Acoustics/Popcorn, Large Knockdown
11 mm	Acoustics/Popcorn, Large Knockdown
13 mm	Acoustics/Popcorn, Large Knockdown
14 mm	Acoustics/Popcorn, Large Knockdown

**Nozzle size requirement could vary based on material viscosity, desired finish, production rate and air settings.*

287227	Fine Finish Kit		
	► Includes 3 mm, 6 mm, 8 mm, 9.5 mm Spray Discs, Retaining Nut and Adapter.		
248888	3 mm Nozzle	248526	8 mm Nozzle
248524	4 mm Nozzle	248527	10 mm Nozzle
248525	6 mm Nozzle		

16A443	5 mm Nozzle	16A448	13 mm Nozzle
16A444	6 mm Nozzle	16A449	14 mm Nozzle
16A445	8 mm Nozzle	16A420	Cap, Nozzle – Soft
16A446	9.5 mm Nozzle	16A405	Cap, Nozzle – Medium
16A447	11 mm Nozzle	16A421	Cap, Nozzle – Hard
HOSE KITS		16A246	Fine Finish Adapter

24B300	3/4 in x 50 ft [1.9 m x 15 m] Fluid Hose with Remote On/Off Switch
24B326	3/4 in x 50 ft [1.9 m x 15 m] Extension Fluid Hose

24B140 MaxLife Endurance High Pressure Pump Kit
 ► Includes: High Pressure Lower, Heavy-Duty Texture Gun, 3/8 in x 50 ft Hose [9.5 mm x 15 m], 1/4 in x 3 ft [25 mm x 0.9 m] 3300 psi Whip Hose and RAC X 643 SwitchTip

235490 10:1 President Air Spray Gun
235737 1030 FC Hose Kit
▶ 3/4 in x 50 ft [19 mm x 15 m] Fluid Hose, 1/2 in x 50 ft [13 mm x 15 m] Air Hose

287987	25 Gallon [95 Liter] Texture Hopper
243380	Cam-Lock Hose Adapter <ul style="list-style-type: none">► Connects Texture Hopper to the HTX 2030 High-Output Texture Pump
24C414	Ball Valve Material Shutoff Kit

*Ask your local authorized Graco Distributor
for details on our complete line of airless
accessories.*

25

1-800-690-2894 • WWW.GRACO.COM

A background image showing a person's hand holding a Graco sprayer nozzle, spraying paint onto a wall. The spray is visible as a fine mist. The person is wearing a dark shirt and a cap.

WARRANTY

We stand behind every piece of equipment we manufacture with the industry's strongest warranty. Spray with the confidence that you will probably never need to use Graco's warranty, but if you do... we will be there.

NOBODY ELSE BUILDS SPRAYERS LIKE THIS

LIFETIME MOTOR WARRANTY

If the motor fails from normal use, we'll replace it under warranty for the original owner for the life of the sprayer [Mark IV, Mark V and Mark X 240 Volt].

LIFETIME DRIVE TRAIN WARRANTY

If the drive train fails from normal use, we'll replace it under warranty for the original owner for the life of the sprayer [Mark IV, Mark V and Mark X 240 Volt].

1-YEAR WARRANTY

Coverage against defects in materials and workmanship on the entire sprayer.

DOWNTIME ELIMINATOR PROGRAM

Part needed for a warranty repair not in stock at your distributor? Get **FREE** next business day air freight delivery when distributor orders the part by 2 p.m. CST.

CONVENIENT SERVICE

Graco offers more than 5,500 authorized distributor locations in North America and over 700 locations to administer warranty repair.



ENDURANCE™ ADVANTAGE **PROGRAM**

A Solution to Keep You Spraying

Purchase any new Graco Mark IV, Mark V, Mark X 240 Volt, 5900 HD, 5900 HD Convertible or 7900 HD texture sprayer and you can purchase an Endurance Pump for up to **80% OFF** the list price. Keep a spare pump on hand to save yourself time and money on every job. If you'd rather repack your own pump, we'll let you choose a **FREE Repair Kit** instead. With reliability you can count on, Graco ensures you'll always be up and spraying! Follow the registration instructions included with your sprayer. No matter what your choice, you'll soon discover how quickly and easily the QuikChange and ProConnect lowers get you up and spraying.

- ✓ On the Job Replacement
- ✓ Quick and Easy Change
- ✓ No Special Tools Needed
- ✓ Gets You Spraying Faster



ProConnect no-tools pump removal system makes swapping out the Endurance Pump fast and easy!



TEXTURE SPRAYER SPECIFICATIONS



		TexSpray RTX 650	TexSpray RTX 900	TexSpray RTX 1250	TexSpray RTX 1500	TexSpray GTX 2000 ^{EX}
PERFORMANCE	Maximum psi [bar]	50 [3.5]	60 [4.2]	70 [4.9]	100 [7]	120 [8.3]
	Maximum gpm [lpm]	.65 [2.5]	.9 [3.4]	1.25 [4.7]	2.0 [7.5]	4.0 [15.1]
	Motor	1.0 hp	1.7 hp	1.7 hp	2.0 hp	N/A
COMPRESSOR	Compressor Air Output	User Supplied Air Compressor Required Minimum Requirements: 3.5 cfm at 40 psi .09 m³/min	4.0 cfm at 45 psi .11 m³/min	4.0 cfm at 45 psi .11 m³/min	6.5 cfm at 45 psi .18 m³/min	User Supplied Air Compressor Required Minimum Requirements: 12 cfm at 100 psi .33 m³/min
INCLUDES	Gun	Air Spray Trigger	Air Spray Trigger	Air Spray Trigger	Air Spray Trigger	Air Spray Trigger
	Hose	3/4 in x 20 ft [19 mm x 6 m]	3/4 in x 25 ft [19 mm x 7.5 m]	3/4 in x 25 ft [19 mm x 7.5 m]	1 in x 25 ft [25.4 mm x 7.5 m]	1 in x 25 ft [25.4 mm x 7.5 m]
	Maximum Hose Length	20 ft [6 m]	25 ft [7.5 m]	25 ft [7.5 m]	100 ft [30 m]	100 ft [30 m]
	Tips	6 mm, 8 mm	4 mm, 6 mm, 8 mm, 12 mm	4 mm, 6 mm, 8 mm, 12 mm	3 mm, 4 mm, 6 mm, 8 mm, 10 mm, 12 mm	3 mm, 4 mm, 6 mm, 8 mm, 10 mm, 12 mm
DIMENSIONS	Weight lbs [kg]	25 [11.3]	60 [27.2]	65 [29.4]	124 [56]	95 [43]
	Dimensions	12 W x 20 L x 20 H in [30 W x 51 L x 51 H cm]	18 W x 23 L x 41 H in [46 W x 58 L x 104 H cm]	20 W x 24 L x 41 H in [51 W x 61 L x 104 H cm]	26 W x 27 L x 40 H in [66 W x 88 L x 102 H cm]	26 W x 27 L x 40 H in [66 W x 88 L x 102 H cm]
	Hopper	Included, 5 gal	Included, 8 gal	Included, 10 gal	Included, 15 gal	Included, 17 gal
MANUALS	Operation	311767	311768	311768	310624	313384
	Repair	311771	311772	311772	310645	313385
TYPICAL APPLICATIONS	Materials Sprayed	Simulated acoustic and drywall mud	Simulated acoustic and drywall mud	Simulated acoustic and drywall mud	Simulated acoustic, drywall mud, elastomers, deck coatings and some cement-based materials	Simulated acoustic, drywall mud, elastomers, deck coatings and some cement-based materials
	Surfaces	Residential and light commercial interiors	Residential and light commercial interiors	Residential and light commercial interiors	Residential and commercial interiors	Residential and commercial interiors
MODEL	Part Number	254973	254974	254975	248201	257030

TEXTURE SPRAYER SPECIFICATIONS



		TexSpray Mark IV Premium	TexSpray Mark V Premium	TexSpray Mark X 240 Volt	TexSpray 5900 HD Convertible	TexSpray 5900 HD Premium	TexSpray 7900 HD Premium
PERFORMANCE	Max psi [bar]	3300 [227]	3300 [227]	3300 [227]	3300 [227]	3300 [227]	3300 [227]
	Max gpm [lpm]	1.10 [4.1]	1.35 [5.1]	2.1 [8.0]	1.6 [6.0]	1.6 [6.0]	2.2 [8.3]
	Motor	2.2 hp DC	2.8 hp DC	4.0 hp DC	160 cc Honda	160 cc Honda	200 cc Honda
COMPRESSOR	Compressor Air Output	Compressor and Air Atomizer Kit required for some texture finishes	Compressor and Air Atomizer Kit required for some texture finishes	Compressor and Air Atomizer Kit required for some texture finishes	Compressor and Air Atomizer Kit required for some texture finishes	Compressor and Air Atomizer Kit required for some texture finishes	Compressor and Air Atomizer Kit required for some texture finishes
INCLUDES	Gun	FlexPlus	Heavy-Duty Texture	N/A	Heavy-Duty Texture	Heavy-Duty Texture	Heavy-Duty Texture
	Hose	3/8 in x 100 ft [9.5 mm x 30 m]	3/8 in x 100 ft [9.5 mm x 30 m]	N/A	3/8 in x 50 ft [9.5 mm x 15 m]	3/8 in x 100 ft [9.5 mm x 30 m]	3/8 in x 100 ft [9.5 mm x 30 m]
	Max Hose Length	300 ft [91.4 m]	300 ft [91.4 m]	300 ft [91.4 m]	300 ft [91.4 m]	300 ft [91.4 m]	300 ft [91.4 m]
	Tips	RAC X 425	RAC X 427 and 531	N/A	RAC X 427 and 531	RAC X 425	RAC X 427 and 531
DIMENSIONS	Weight lbs [kg]	108 [49]	135 [61]	142 [64]	149 [68]	147 [67]	159 [72]
	Dimensions	22 W x 25 L x 29 H in [56 W x 62 L x 76 H cm]	22 W x 25 L x 31 H in [56 W x 62 L x 81 H cm]	22 W x 25 L x 31 H in [56 W x 62 L x 81 H cm]	24.5 W x 32.25 L x 32.25 H in [62 W x 81.9 L x 82 H cm]	22 W x 39 L x 41 H in [56 W x 99 L x 104 H cm]	24.5 W x 33 L x 32.25 H in [62 W x 83.8 L x 82 H cm]
	Hopper	Optional Add-On	Optional Add-On	Optional Add-On	Optional Add-On	Optional Add-On	Optional Add-On
MANUALS	Operation	3A0156	3A0156	312649	310892	3A0242	3A0242
	Repair	3A0157	3A0157	312649	311046	3A0243	3A0243
TYPICAL APPLICATIONS	Materials Sprayed	Oil-based coatings, enamels, latex, block-fillers, elastomerics, epoxies, drywall mud and other high-build materials	Oil-based coatings, enamels, latex, block-fillers, elastomerics, epoxies, drywall mud and other high-build materials	Oil-based coatings, enamels, latex, block-fillers, elastomerics, epoxies, drywall mud and other high-build materials	Oil-based coatings, enamels, latex, block-fillers, elastomerics, epoxies, drywall mud and other high-build materials	Oil-based coatings, enamels, latex, block-fillers, elastomerics, epoxies, drywall mud and other high-build materials	Oil-based coatings, enamels, latex, block-fillers, elastomerics, epoxies, drywall mud and other high-build materials
	Surfaces	Medium to large residential and commercial interiors and exteriors	Medium to large residential and commercial interiors and exteriors	Large residential and commercial interiors and exteriors	Medium to large residential and commercial interiors and exteriors	Medium to large residential and commercial interiors and exteriors	Large residential and commercial interiors and exteriors
MODEL	Part Number	258729	258730	255914	Convertible—255630 With Electric Motor Kit [Non CSA]—255631 With Electric Motor Kit [CSA]—255954	258734	258735



		10:1 President
PERFORMANCE	Max psi [bar]	1000 [70]
	Max gpm [lpm]	3.0 [11]
	Motor	President Air
COMPRESSOR	Compressor Air Output	User Supplied Minimum Air Compressor Rating: 80 cfm at 90 psi for best results
INCLUDES	Gun	Heavy-Duty Air Spray
	Max Hose Length	200 ft [60.7 m]
	Nozzle	6 mm
DIMENSIONS	Weight lbs [kg]	43 [20] Pump Only
	Dimensions	7 W x 57 L x 18 W in [18 W x 145 L cm]
MANUALS	CS Models	306402
	SST Models	309489
TYPICAL APPLICATIONS	Materials Sprayed	Smooth to heavily aggregated textures with silica sand, perlite, vermiculite and polystyrene, smooth, medium, coarse and extra coarse grade
	Surfaces	Heavy-duty residential and commercial interiors and exteriors
MODEL	Part Number	Carbon Steel Complete-225886 Carbon Steel Complete-225877 SST Bare-954088 SST Complete-987429

		TexSpray HTX 2030– Complete	TexSpray HTX 2030– Complete Plus+	
SPRAYER CONFIGURATIONS	Part Number	258740	258741	
	For Spraying	For exterior aggregate and smooth finishes as well as common interior texture finishes such as orange peel, splatter, knockdown and simulated acoustic.	For exterior aggregate and smooth finishes as well as common interior texture finishes. Can also airlessly apply the wide range of heavier smooth coatings, Level 5, primers and paints.	
	INCLUDES:			
	High-Output Piston Texture Pump	✓	✓	
	FreeFlo Inline Gun	✓	✓	
	3/4 in x 50 ft [19 mm x 15 m] Hose	✓	✓	
	55 Gallon Suction Set	✓	✓	
	Fine Finish Kit with 1/8 in, 1/4 in, 5/16 in and 3/8 in Nozzles	✓	✓	
	4, 6, 8, 10 mm Nozzles	✓	✓	
	RAC X 671 Airless Tip	✓	✓	
	MaxLife Endurance High Pressure Airless Pump	Optional [Pump Kit 24B140]	✓	
	Heavy-Duty Texture Gun	N/A	✓	
	3/8 in x 50 ft [9.5 mm x 15 m] Blue Max II Hose & 3 ft [1 m] Whip Hose	N/A	✓	
	RAC X 643 Airless Tip	N/A	✓	
			High-Output Texture Pump	With High-Output Texture Pump
TECHNICAL SPECIFICATIONS	Maximum Tip Size	0.071	0.071	0.048
	Maximum gpm [lpm]	3.0 [11]	3.0 [11]	2.2 [8.3]
	Maximum psi [bar]	1000 [70]	1000 [70]	3300 [227]
	Engine	200 cc Honda [6.5 hp at 3600 rpm]	200 cc Honda [6.5 hp at 3600 rpm]	
	Compressor	User supplied air compressor required for some texture finishes. Minimum air compressor rating 25 cfm at 90 psi [708 lpm at 6.2 bar] for best results	User supplied air compressor required for some texture finishes. Minimum air compressor rating 25 cfm at 90 psi [708 lpm at 6.2 bar] for best results	
	Weight lbs [kg]	155 [70]	155 [70]	150 [68]
	PUMP:			
	Intake	QuikAccess	QuikAccess	QuikAccess
	Rod	Hard Chrome	Hard Chrome	Chromex
	Cylinder	Hard Chrome	Hard Chrome	MaxLife
	Packings	HD Poly	HD Poly	V-Max Blue



ABOUT GRACO

PROVEN QUALITY. LEADING TECHNOLOGY

Founded in 1926, Graco is a world leader in fluid handling systems and components. Graco products move, measure, control, dispense and apply a wide range of fluids and viscous materials used in vehicle lubrication, commercial and industrial settings.

The company's success is based on its unwavering commitment to technical excellence, world-class manufacturing and unparalleled customer service. Working closely with qualified distributors, Graco offers systems, products and technology that set the quality standard in a wide range of fluid handling solutions. Graco provides equipment for spray finishing, protective coating, paint circulation, lubrication, and dispensing sealants and adhesives, along with power application equipment for the contractor industry. Graco's ongoing investment in fluid management and control will continue to provide innovative solutions to a diverse global market.

GRACO LOCATIONS

MAILING ADDRESS

P.O. Box 1441
Minneapolis, MN 55440-1441
Tel: 612-623-6000
Fax: 612-623-6777

AMERICAS

MINNESOTA

Worldwide Headquarters
Graco Inc.
88-11th Avenue N.E.
Minneapolis, MN 55413

EUROPE

BELGIUM

European Headquarters
Graco N.V.
Industrieterrein-Oude Bunders
Slakweidestraat 31
3630 Maasmechelen,
Belgium
Tel: 32 89 770 700
Fax: 32 89 770 777

ASIA PACIFIC

AUSTRALIA

Graco Australia Pty Ltd
Suite 17 2 Enterprise Drive
Bundoora Victoria 3083
Australia
Tel: 61 3 9467 8558
Fax: 61 3 9467 8559

CHINA

Graco Hong Kong Ltd.
Shanghai Representative Office
Room 118 1st Floor
No.2 Xin Yuan Building
No.509 Cao Bao Road
Shanghai, P.R. China 200233
Tel: 86 21 649 50088
Fax: 86 21 649 50077

INDIA

Graco Hong Kong Ltd.
India Liaison Office
Room 103, Level 4, Augusta Point
Golf Course Road
Gurgaon, Haryana, India 122001
Tel: +91 124 435 4208
Fax: +91 124 435 4001

JAPAN

Graco K.K.
1-27-12 Hayabuchi
Tsuzuki-ku
Yokohama City, Japan 2240025
Tel: 81 45 593 7300
Fax: 81 45 593 7301

KOREA

Graco Korea Inc.
Choheung Bank Building
4th Floor #1599
Gwangyang-Dong, Dongan-Ku,
Anyang-Si, Gyunggi-Do,
Korea 431-060
Tel: 82 31 476 9400
Fax: 82 31 476 9801

SALES/ DISTRIBUTION/ SERVICE

Call today for product information or to request a demonstration.

800-690-2894 or visit us at www.graco.com.

Graco Inc. is registered to I.S. EN ISO 9001

North America
Customer Service
800-690-2894
Fax 800-334-6955